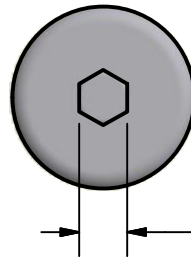


SCALE 1 / 2



SCALE 1 / 2

**SPECIFICATIONS**

|                             |                                     |
|-----------------------------|-------------------------------------|
| Battery Type                | 4x C (LR14) Cell Alkaline Batteries |
| Operating Temperature       | -20° C to +50° C (-4 °F to 122 °F)  |
| Maximum Operating pressure  | 2500 psi (172 bar)                  |
| O-Ring type and Size        | 2x 2-128/V90 (Viton O-ring)         |
| Run time in Continuous Mode | 200 + hours                         |
| Runtime in Pulse Mode       | 325 + hours                         |
| Open air signal strength    | 15 meters (50 feet)                 |
| In-Pipe signal strength     | 9 meters (30 feet)                  |
| Delrin Can part number      | WT-C6-can or WT-C6-can-MT           |

**Note:**

Open air test and in-pipe tests are carried out with a factory test receiver at full gain and external antenna connected. In-pipe test is performed by placing transmitter inside a 1/2" thick pipe.

**Duracell - Procell ALKALINE batteries are strongly recommended in order to get the most run time on our transmitters.**

|   |            |  |
|---|------------|--|
| Drawn by:   | PM         |  |
| Revision Date:  | 2018-03-16 |  |
| THE INFORMATION CONTAINED IN THIS DRAWING IS THE SOLE PROPERTY OF WAVETRAK ELECTRONICS LTD., ANY PRODUCTION IN PART OR AS A WHOLE WITHOUT WRITTEN PERMISSION OF WAVETRAK ELECTRONICS IS PROHIBITED. |            | <b>TITLE</b><br><b>WT-C6-TR Spec Sheet</b> |
| UNITS   | REV        | SHEET                                      |
| mm [inches]   | 4          | 1  |