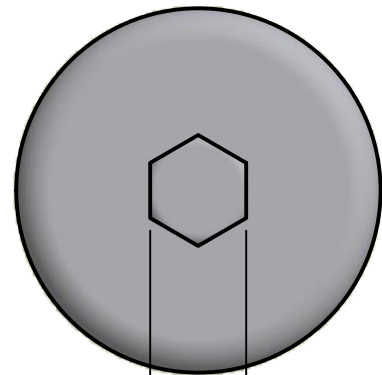


SCALE 1 / 2



SCALE 1 : 1

**Note:**  
Open air test and in-pipe tests are carried out with a factory test receiver at full gain and external antenna connected. In-pipe test is performed by placing transmitter inside a 1/2" thick pipe.

**Duracell - Procell ALKALINE batteries are strongly recommended in order to get the most run time on our transmitters.**

SPECIFICATIONS	
Battery Type	4x C (LR14) Cell Alkaline Batteries
Operating Temperature	-20° C to +50° C (-4 °F to 122 °F)
Maximum Operating pressure	2500 psi (172 bar)
O-Ring type and Size	2x 2-128/V90 (Viton O-ring)
Run time in Continuous Mode	200 + hours
Runtime in Pulse Mode	325 + hours
Open air signal strength	15 meters (50 feet)
In-Pipe signal strength	9 meters (30 feet)
Delrin Can part number	WT-C6-can or WT-C6-can-MT

Drawn by:	PM	
Revision Date:	2018-03-16	
THE INFORMATION CONTAINED IN THIS DRAWING IS THE SOLE PROPERTY OF WAVETRAK ELECTRONICS LTD., ANY PRODUCTION IN PART OR AS A WHOLE WITHOUT WRITTEN PERMISSION OF WAVETRAK ELECTRONICS IS PROHIBITED.		TITLE
		<b>WT-C6-Ex Spec Sheet</b>
UNITS	REV	SHEET
mm [inches]	4	1